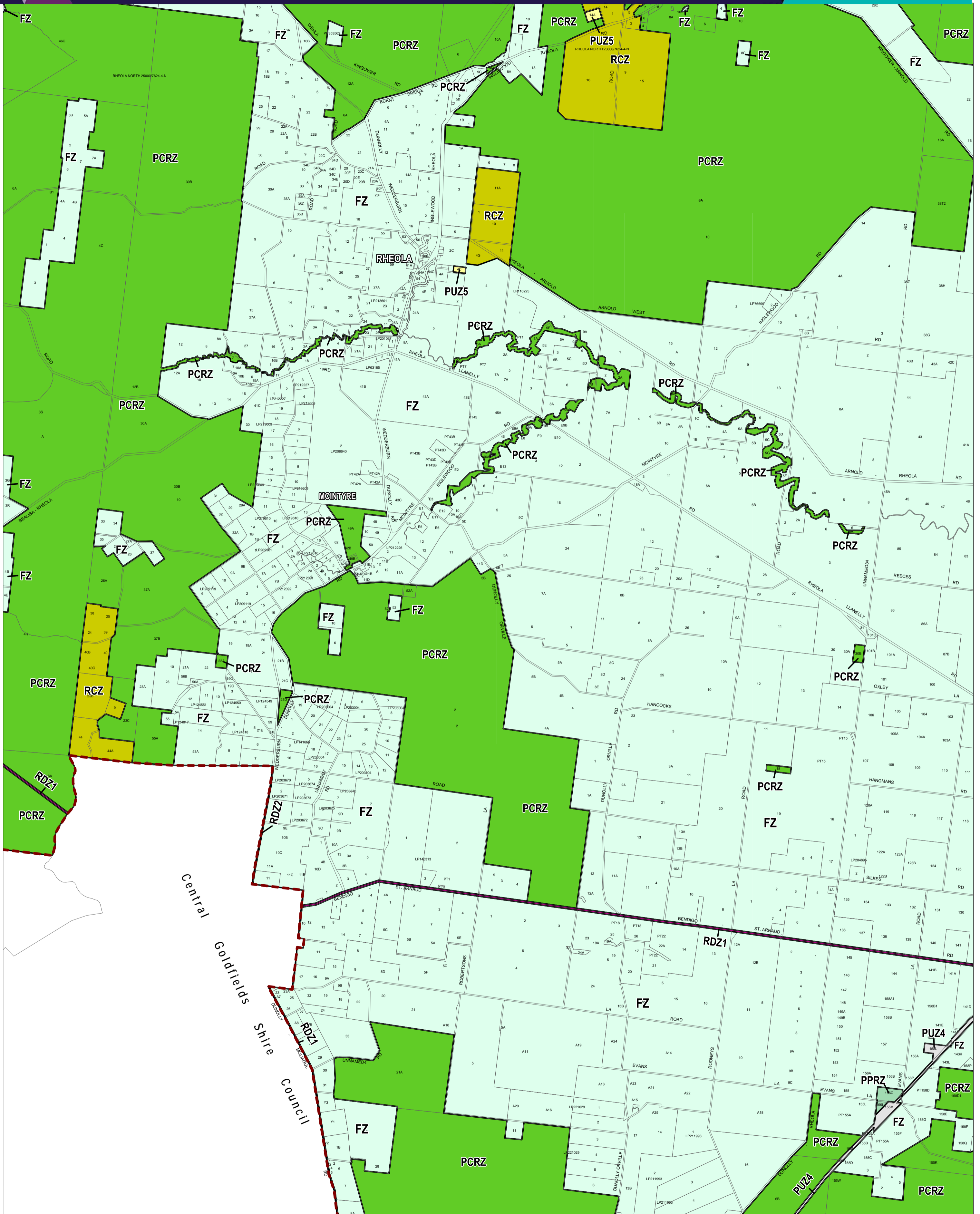


# LODDON PLANNING SCHEME - LOCAL PROVISION



This publication is copyright. No part may be reproduced by any process except in accordance with the provisions of the Copyright Act. © State of Victoria.

This map should be read in conjunction with additional Planning Overlay Maps (if applicable) as indicated on the INDEX TO MAPS.

- Public Land
- Public Conservation And Resource Zone
- Public Park And Recreation Zone
- Public Use Zone - Cemetery/crematorium
- Public Use Zone - Transport
- Road Zone - Category 1
- Road Zone - Category 2
- Rural
- Farming Zone
- Rural Conservation Zone

Municipal Boundary (if shown)

1000 0 1000 2000 3000 m  
 AUSTRALIAN MAP GRID ZONE 55

PREPARED BY: Planning Mapping Services



Printed: 16/10/2017

AMENDMENT C39

VICTORIA  
 State Government

Environment,  
 Land, Water  
 and Planning

INDEX TO ADJOINING SCHEME MAPS

1	2	3	4	5	6
7	8	9	10	11	12
13	14	15	16	17	18
19	20	21	22	23	24
25	26	27	28	29	30
31	32	33	34	35	36
37	38	39	40	41	42