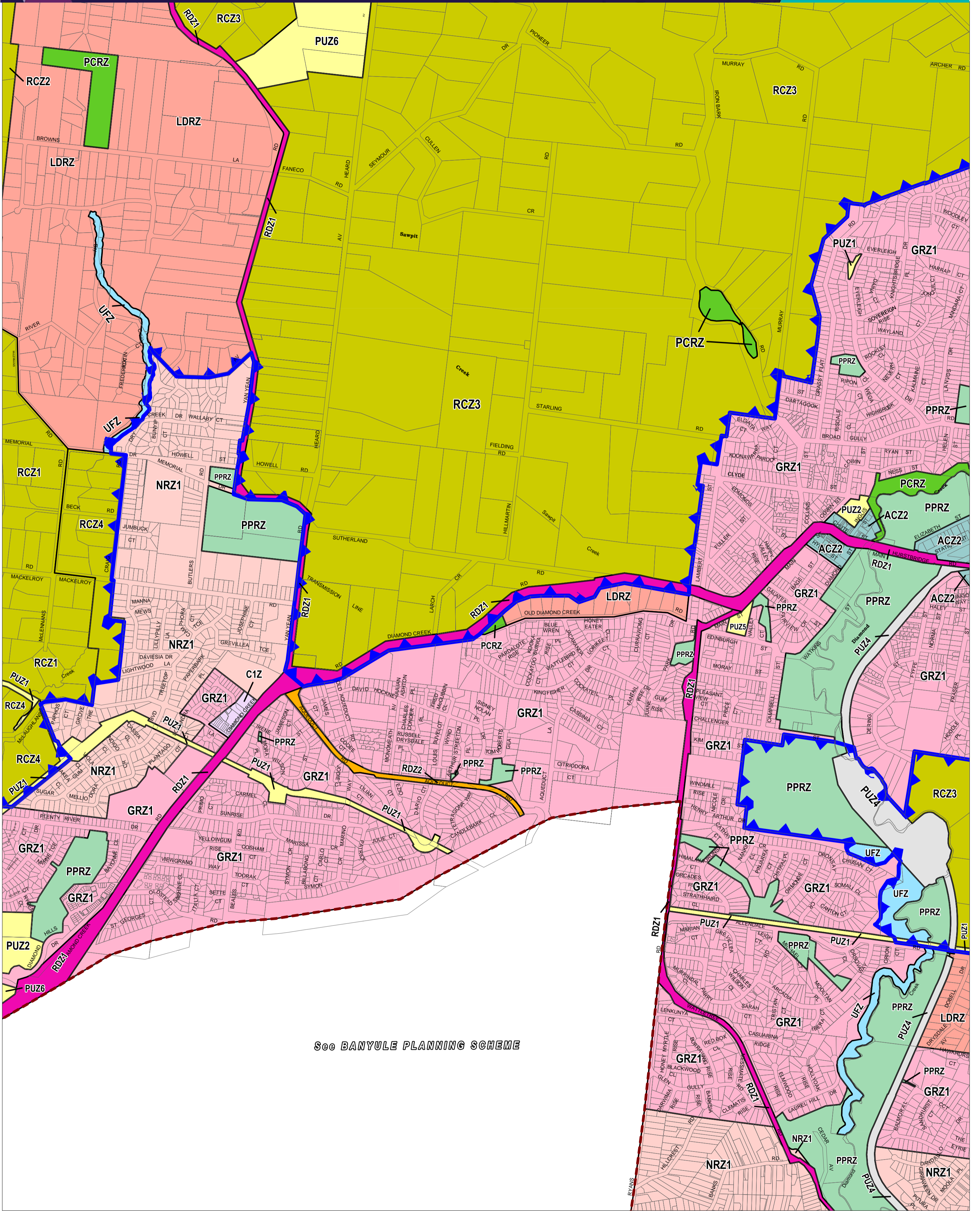


NILLUMBIK PLANNING SCHEME - LOCAL PROVISION



See BANYULE PLANNING SCHEME

This publication is copyright. No part may be reproduced by any process except in accordance with the provisions of the Copyright Act. © State of Victoria. This map should be read in conjunction with additional Planning Overlay Maps (if applicable) as indicated on the INDEX TO MAPS.

| Commercial | Public Land | Residential | Rural | Special Purpose |
|---|----------------------------------|--|---|--|
| C1Z Commercial 1 Zone | PUZ4 Public Use Zone - Transport | GRZ1 General Residential Zone - Schedule 1 | RCZ1 Rural Conservation Zone - Schedule 1 | ACZ2 Activity Centre Zone - Schedule 2 |
| | RDZ1 Road Zone - Category 1 | LDRZ Low Density Residential Zone - Schedule 1 | RCZ2 Rural Conservation Zone - Schedule 2 | UFZ Urban Floodway Zone |
| | RDZ2 Road Zone - Category 2 | NRZ1 Neighbourhood Residential Zone - Schedule 1 | RCZ3 Rural Conservation Zone - Schedule 3 | |
| PCRZ Public Conservation And Resource Zone | | | RCZ4 Rural Conservation Zone - Schedule 4 | |
| PPRZ Public Park And Recreation Zone | | | | |
| PUZ5 Public Use Zone - Cemetery/crematorium | | | | |
| PUZ2 Public Use Zone - Education | | | | |
| PUZ6 Public Use Zone - Local Government | | | | |
| PUZ1 Public Use Zone - Service And Utility | | | | |

Municipal Boundary (If shown)



Printed: 18/12/2017
AMENDMENT GC76

AUSTRALIAN MAP GRID ZONE 55
PREPARED BY: Planning Mapping Services



INDEX TO ADJOINING SCHEME MAPS

