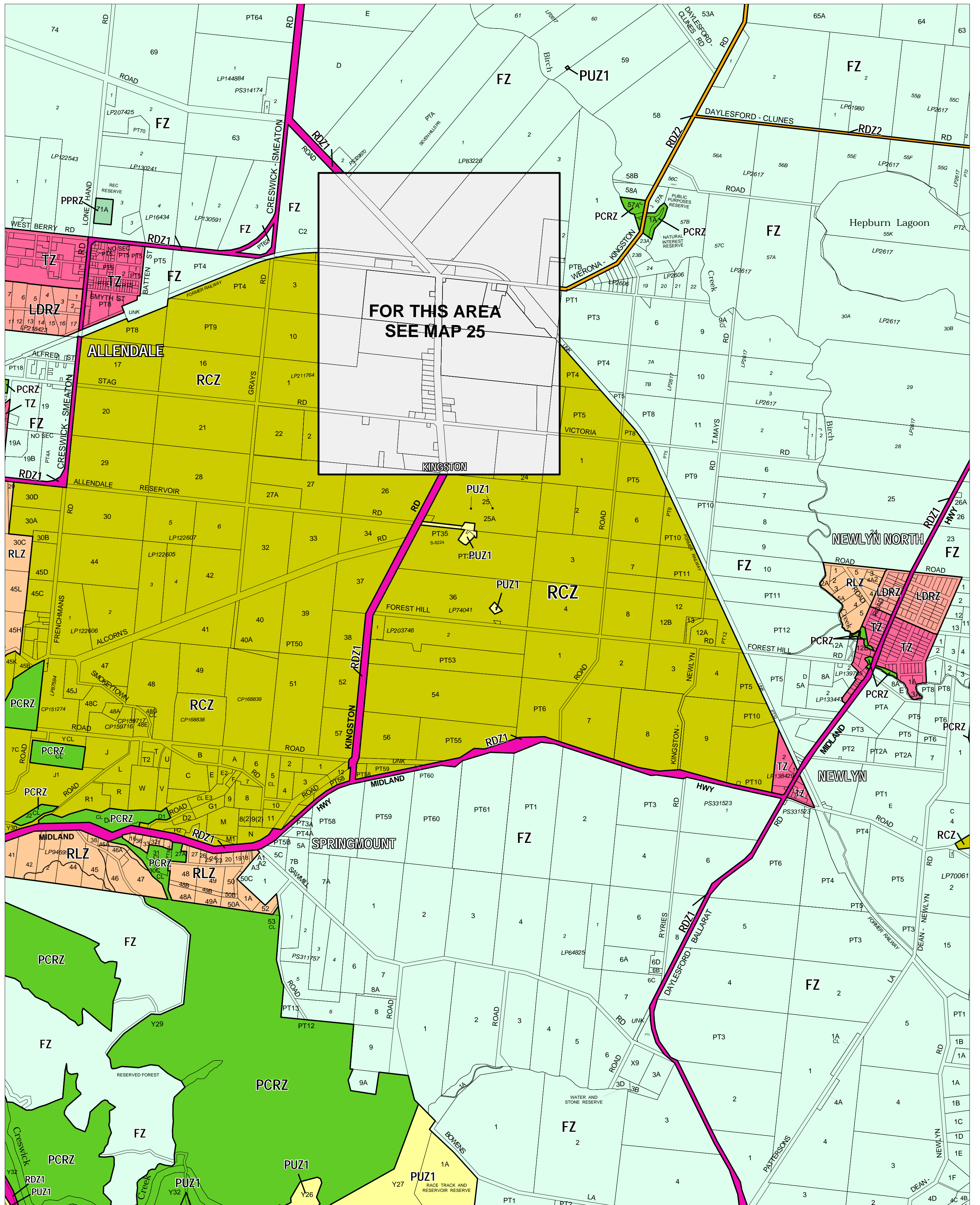


HEPBURN PLANNING SCHEME - LOCAL PROVISION

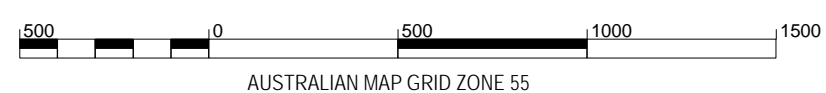


FOR THIS AREA
SEE MAP 25

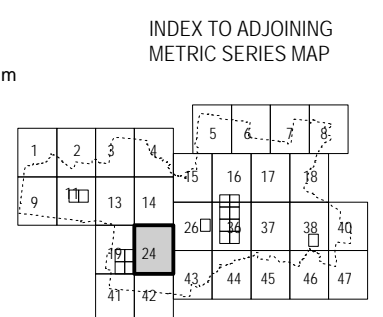
This publication is copyright. No part may be reproduced by any process except in accordance with the provisions of the Copyright Act. © State of Victoria.

This map should be read in conjunction with additional Planning Overlay Maps (if applicable) as indicated on the INDEX TO MAPS.

| Public Land | |
|-------------|---------------------------------------|
| | Public Conservation And Resource Zone |
| | Public Park And Recreation Zone |
| | Public Use Zone - Service And Utility |
| | Road Zone - Category 1 |
| | Road Zone - Category 2 |
| Residential | |
| | Low Density Residential Zone |
| | Township Zone |
| Rural | |
| | Farming Zone |
| | Rural Conservation Zone |
| | Rural Living Zone |



AUSTRALIAN MAP GRID ZONE 55



Printed: 8/9/2008

AMENDMENT C42

ZONES

MAP No 24