

## **21.11 ARMSTRONG CREEK URBAN GROWTH AREA**

09/03/2017  
C301

### **21.11-1 Key Issues and Influences**

28/01/2010  
C129(Part1)

The Armstrong Creek Urban Growth Area (ACUGA) is the primary growth area for the G21 Region. At capacity, the ACUGA is expected to accommodate approximately 54,000 persons and 22,000 dwellings.

The ACUGA will be developed as a sustainable community, setting new benchmarks in best practice urban development.

Development in the ACUGA will provide a wide range of housing types and densities in an urban structure based on walkable neighbourhoods, public transport and mixed use activity centres.

Areas of visual sensitivity along the Mount Duneed ridgeline and flood prone areas to the east of Barwon Heads Road will be protected from urban development.

The rural break between the ACUGA and Surf Coast Shire is to be maintained.

Rural land outside of the ACUGA will be maintained in productive agricultural parcels which provide an attractive rural setting.

Land for extractive industries to the west of Ghazeepore Road will be protected from incompatible development.

### **21.11-2 Objectives**

23/10/2014  
C267

- To provide a wide range of housing types and densities in an urban structure based on walkable neighbourhoods, public transport and mixed use activity centres.
- To establish a network of mixed use activity centres providing retail, community and educational facilities for the incoming Armstrong Creek community.
- To create an economic and employment structure that complements the broader Geelong region while providing employment areas, business opportunities and local jobs.
- To protect and enhance the natural environmental features and cultural heritage values of the Armstrong Creek area and provide a distinct urban character and green setting.
- To ensure the provision of a comprehensive and well connected network of open space and recreation facilities.
- To provide a sustainable movement and access network within the Armstrong Creek area.
- To provide utility services that meet current best practice standards and are environmentally sustainable.
- To ensure the orderly and controlled development of Armstrong Creek.
- To encourage sustainable design and development to minimise energy and resource use within Armstrong Creek, in particular the Armstrong Creek Town Centre Precinct.

### **Strategies**

- Ensure land use and development in the Armstrong Creek Urban Growth Area proceeds generally in accordance with the Armstrong Creek Urban Growth - Framework Plan Incorporated Document.

- Require the preparation of Precinct Structure Plans providing for at least one ‘walkable neighbourhood’ of approximately 1.6 kilometres in diameter, prior to any application for land use and development in the Armstrong Creek Urban Growth Area.
- Ensure that Precinct Structure Plans in the ACUGA are generally in accordance with the Armstrong Creek Urban Growth Plan, Volume 1.
- Require planning permit applications for subdivision to demonstrate:
  - that required infrastructure will be provided to the subdivision area in a timely manner.
  - that the subdivision layout will achieve integration with existing or future subdivision layouts for surrounding landholdings; and
  - that the subdivision will facilitate the orderly development of the precinct.

### 21.11-3

03/03/2016  
C333

### Implementation

These strategies will be implemented by:

#### Applying Zones and overlays

Applying the Heritage Overlay to significant heritage sites.

#### Further Work

Prepare an Infrastructure Funding Model and Development Contributions Plan for the Urban Growth Area.

Coordinate the preparation of Precinct Structure Plans for development areas within the Urban Growth Area.

Coordinate the input of relevant State Government agencies and service providers to ensure the realisation of the development vision for the Armstrong Creek Urban Growth Area, particularly the provision of appropriate infrastructure and services.

Apply relevant Land Management Overlays (Floodway Overlay and Land Subject to Inundation Overlay) to areas prone to flooding / inundation once post development conditions are established based upon preparation of drainage schemes.

Investigate the opportunity for an integrated approach to the development of Cultural Heritage Management Plans for the entire ACUGA.

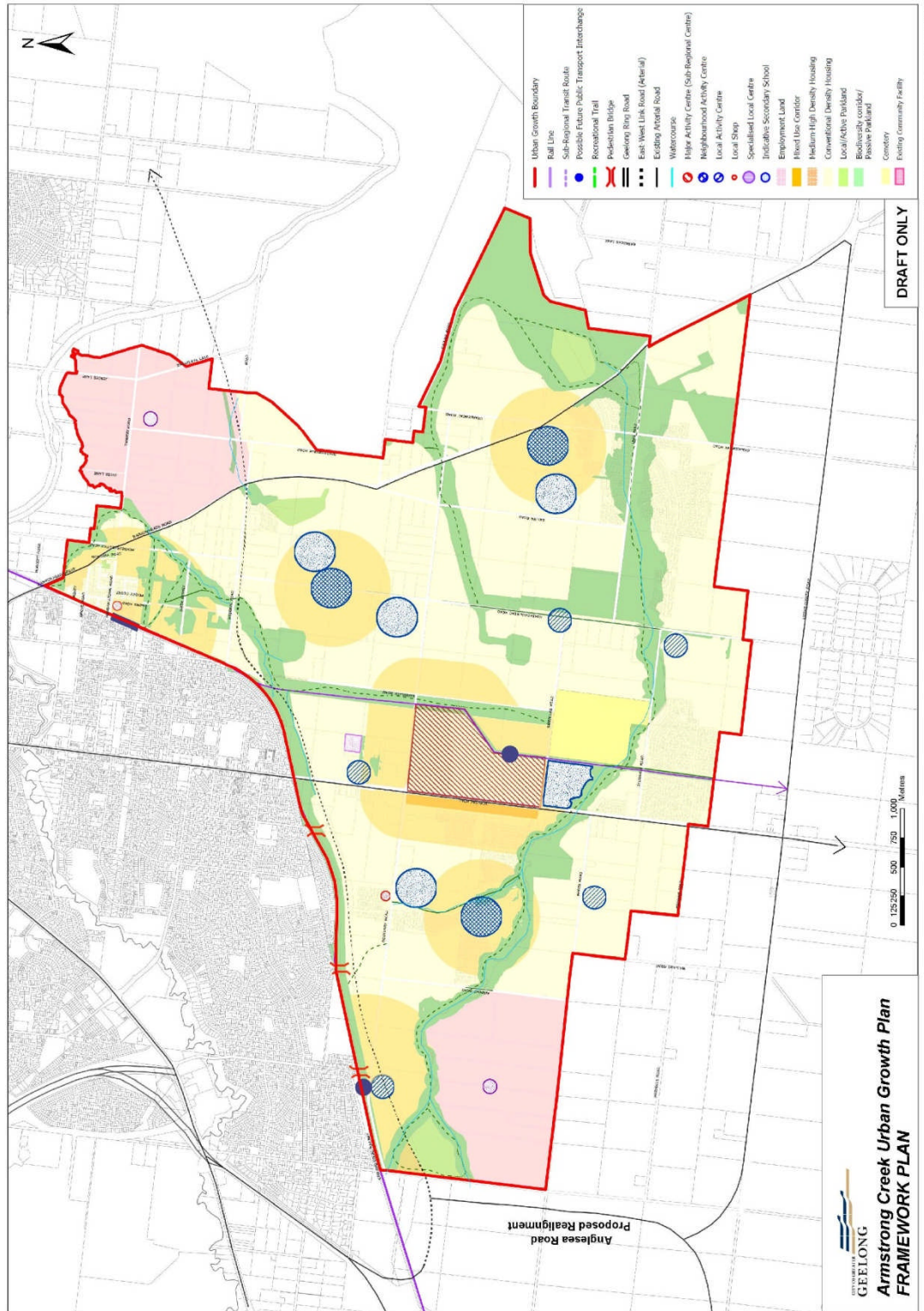
Investigate the establishment of a Cultural Heritage Interpretation Trail.

#### Reference Document

*Armstrong Creek Urban Growth Plan, Volume 1, May 2010, Amended September 2012.*

21.11-4  
09/03/2017  
C301

Armstrong Creek Urban Growth Plan - Framework Plan map



Prepared by City of Greater Geelong - June 2015