

28/6/2012  
C161**SCHEDULE 1 TO THE INCORPORATED PLAN OVERLAY**

Shown on the planning scheme map as **IPO1**.

**LOCKERBIE PRECINCT STRUCTURE PLAN****Purpose**

The purpose of this Incorporated Plan Overlay is to give effect to the objectives, requirements, guidelines and conditions of the *Lockerbie Precinct Structure Plan*.

**1.0 Requirement before a permit is granted**28/6/2012  
C161

Development on land in the Conservation Management Plan Area shown on Map 1 of this Schedule and Plan 6- Biodiversity and Threatened Species Action Plan in the *Lockerbie Precinct Structure Plan* must be undertaken in accordance with the relevant management actions as outlined in the approved Conservation Management Plan.

The Lockerbie Conservation Management Plan may be amended to the satisfaction of the Department of Sustainability and Environment.

The subdivision of land within or adjoining the Conservation Management Plan area must accord with the Conservation Management Plan boundary as shown on Map 1 to this Schedule and Plan 6 - Biodiversity and Threatened Species Action Plan in the Lockerbie Precinct Structure Plan.

An application for development of land in the Conservation Management Plan area as shown on Map 1 to this Schedule and Plan 6 – Biodiversity and Threatened Species Action Plan in the *Lockerbie Precinct Structure Plan*, must demonstrate that it is in accordance with the approved Lockerbie Conservation Management Plan.

**2.0 Conditions and requirements for permits**28/6/2012  
C161**Conditions - all permits****Growling Grass Frog**

Works on land in the Conservation Management Plan area shown on Map 1 of this Schedule and Plan 6 – Biodiversity and Threatened Species Action Plan in the *Lockerbie Precinct Structure Plan* must be undertaken in accordance with the approved Lockerbie Conservation Management Plan (CMP).

Unless the land included within the Conservation Management Plan area as shown on Plan 6 - Biodiversity and Threatened Species Action Plan of the *Lockerbie Precinct Structure Plan* has been voluntarily transferred into the Crown Reserve System, the Owner must:

- Enter into a legally, binding on-title agreement with the Secretary of the Department of Sustainability and Environment under Section 69 of the Conservation Forest and Lands Act 1987 before the Commencement of Works on the land. The agreement must provide for the following:
  - Protection of the conservation area
  - The landowner to undertake all pre-construction maintenance and monitoring (Phase One) actions in accordance with the approved Conservation Management Plan

- The landowner granting Department of Sustainability and Environment (or its nominee) rights of access to undertake habitat works (Phase Two) and any additional actions as required.
- The landowner to undertake ongoing maintenance and monitoring activities (Phase Three) in perpetuity as outlined in the approved Conservation Management Plan.

The land owner must pay the reasonable costs of preparation, execution and registration of the agreement.

**Conditions - permits relating to land described as potential habitat for Striped Legless Lizard on Map 1 to Schedule 1 to Clause 43.03**

Before, during and after the carrying out of any construction of any buildings or carrying out of works or removal of native vegetation, the requirements of the *Salvage and Translocation of Striped Legless Lizard in the Urban Growth Areas of Melbourne: Strategic Approach (DSE 2011)*; and *Salvage and Translocation of Striped Legless Lizard in the Urban Growth Areas of Melbourne: Operational Plan (DSE 2011)* must be implemented and complied with to the satisfaction of the Secretary of the Department of Sustainability and Environment.

**Requirements**

The layout and design of the drainage corridors must be to the satisfaction of Melbourne Water and the Responsible Authority.

A shared trail of at least three metres in width must be provided along the drainage corridors and the Merri Creek corridor.

Design of paths, bridges and boardwalks in the drainage corridors (both the Merri Creek and the constructed waterways) must be above the 1:100 year flood level (if running parallel to the corridor). Pedestrian bridges across the Merri Creek and constructed drainage corridors must be above the 1:100 year floor level. Where a 1:100 year flood level is not achievable, measures on the approach of the creek or constructed drainage corridors must be installed to the satisfaction of Melbourne Water.

The scattered trees identified on Plan 6 of the Lockerbie Precinct Structure Plan must be retained within the Merri Creek linear corridor and passive open space areas.

Landscape master planning of open space adjacent to the Merri Creek corridor must be designed to protect areas of environmental significance (i.e habitat zones) from pedestrian and vehicle access.

Any passive open space areas within the Merri Creek must be designed to minimise disturbance to any habitat zones or existing or created Growling Grass Frog habitat.

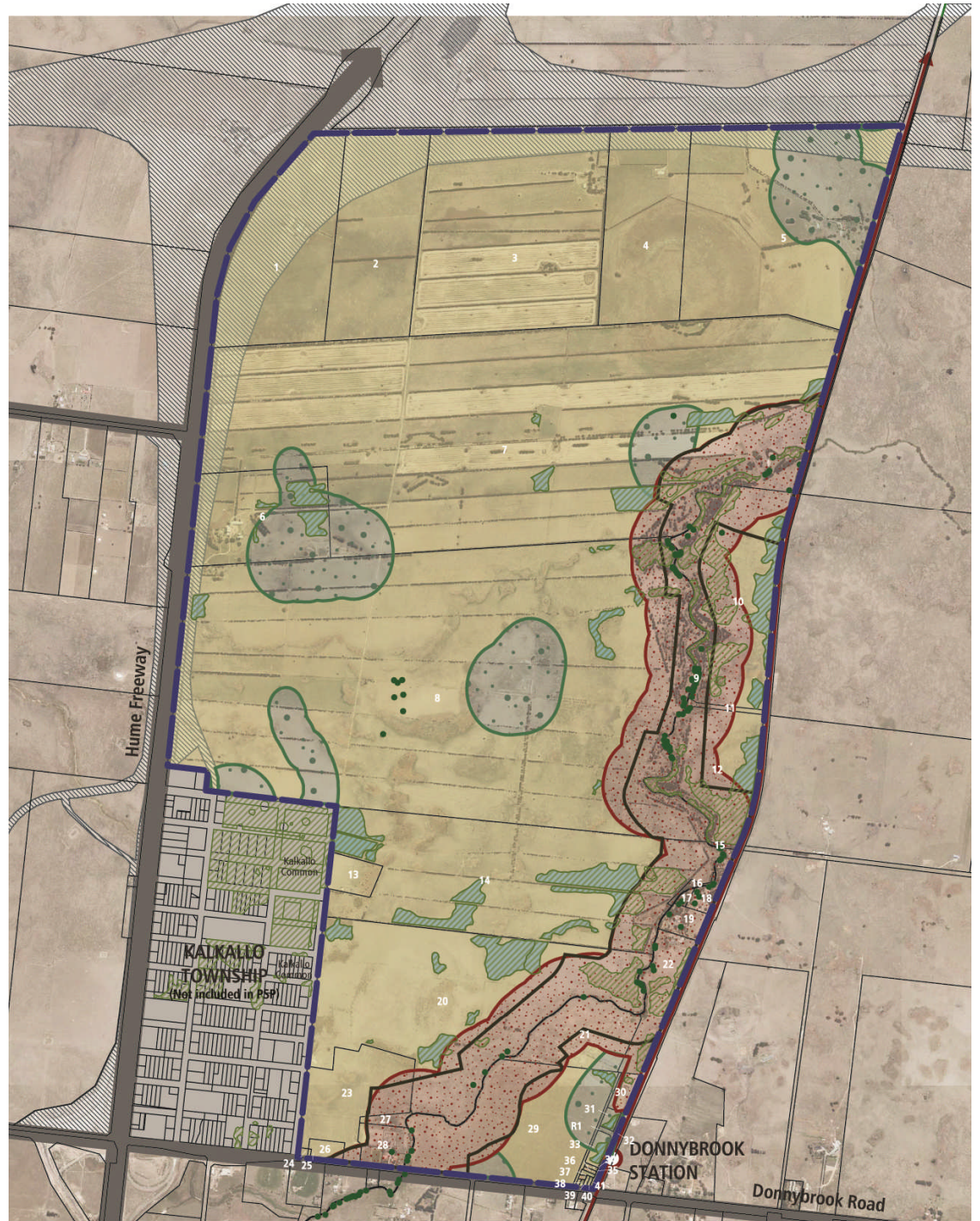
**3.0**

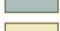




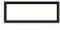


**Decision guidelines**

28/6/2012  
C161

How the application implements and complies with an approved Conservation Management Plan applying to the land pursuant to an approval to take a controlled action in accordance with the Delivering Melbourne's Newest Sustainable Communities Program Report, December 2009 under Part 10 of the *Environment Protection and Biodiversity Act 1999 (Commonwealth)*.

Map 1 to Schedule 1 to Clause 43.03



-  Precinct Area
-  Area where Conservation Management Plan applies
-  High contribution to species Golden Sun Moth habitat
-  Medium contribution to species Golden Sun Moth habitat
-  Growling Grass Frog Category 1 Habitat
-  Growling Grass Frog Category 2 Habitat
-  Scattered Trees
-  Habitat Zones (As per SMEC report 'October 2010')
-  Property Reference Number
-  Parcel Boundary
-  OMRTC Public Acquisition Overlay

**Note:**

- Refer to Lockerbie NVPP for details in native vegetation
- The entire Precinct is identified as potential for Striped Legless Lizard
- The land covered by the PAO (for the OMRR) requires a separate approval process for threatened species