

73.04

21/09/2018
VC150

NESTING DIAGRAMS

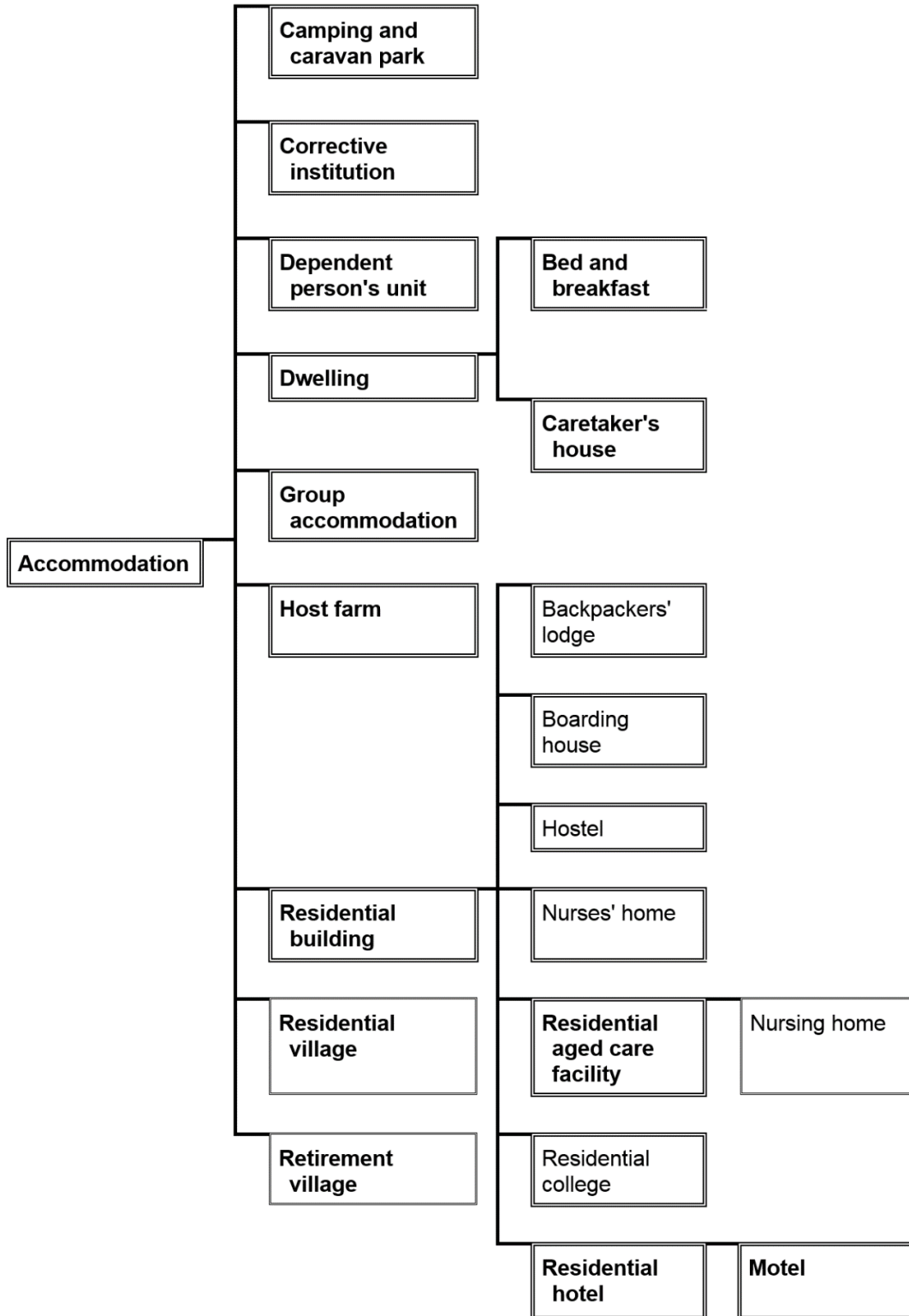
The information in the table to Clause 73.03 is set out in the following diagrams as a means of indicating the nesting of land use terms.

The table to Clause 73.03 prevails if there is any inconsistency between the table and the diagrams or list.

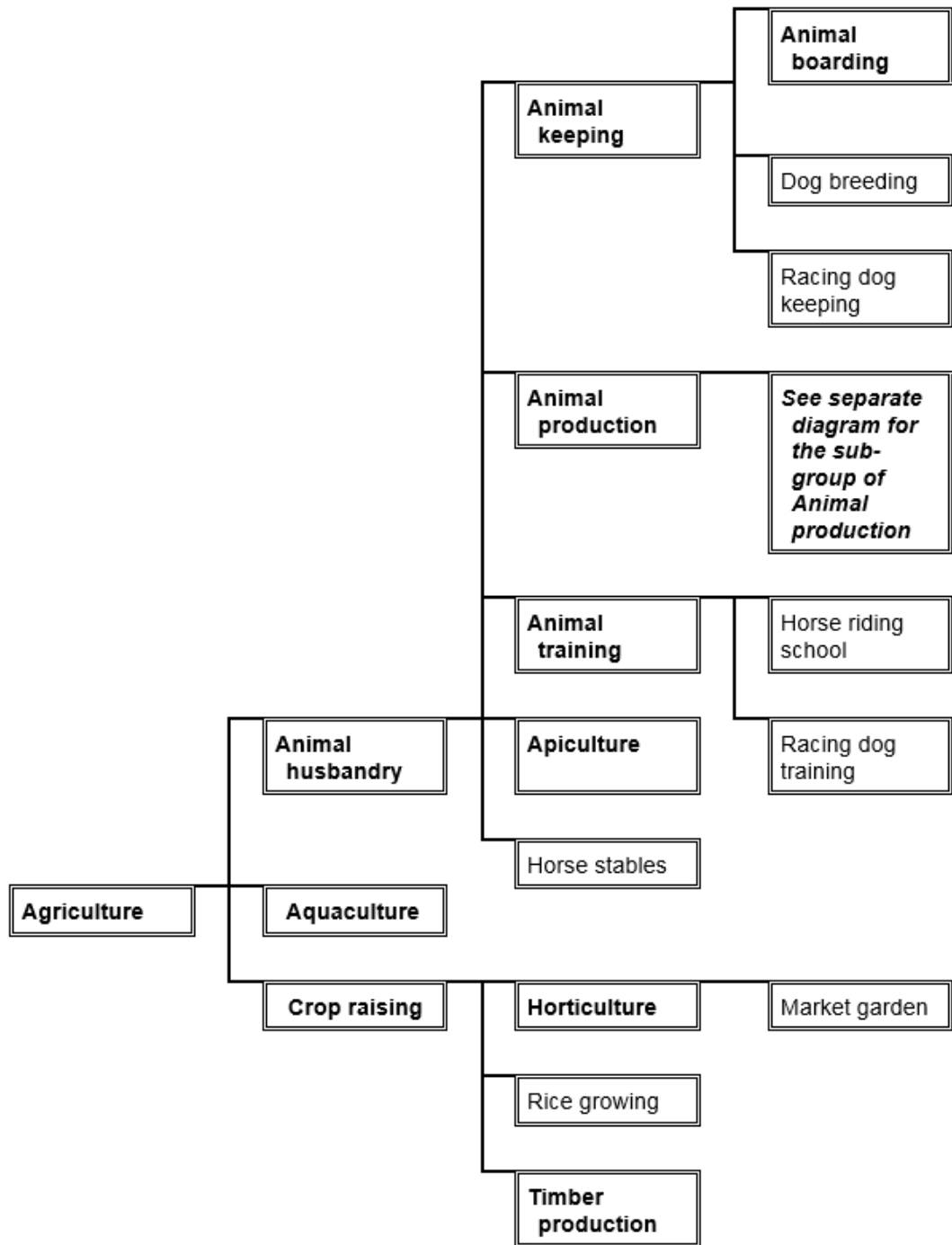
Land use terms that are not nested are listed at Clause 73.04-18.

Land use terms in bold font are defined in Clause 73.03.

Accommodation group



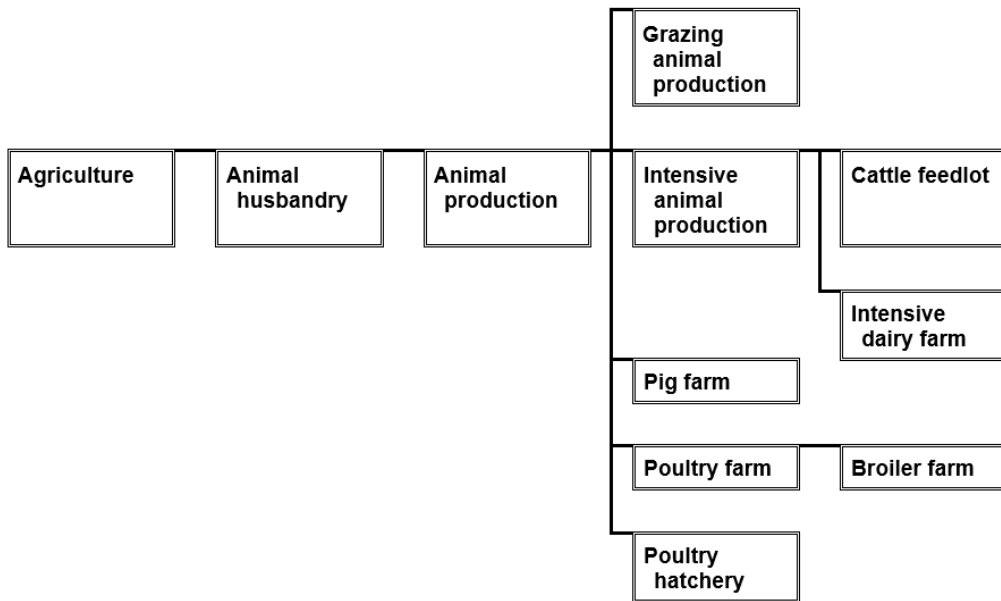
Agriculture group



73.04-3

21/09/2018
VC150

Agriculture group (sub-group of Animal production)



73.04-4

21/09/2018
VC150

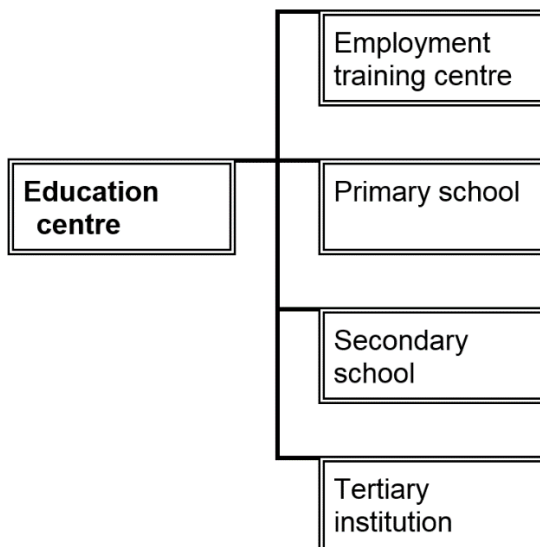
Child care centre group



73.04-5

21/09/2018
VC150

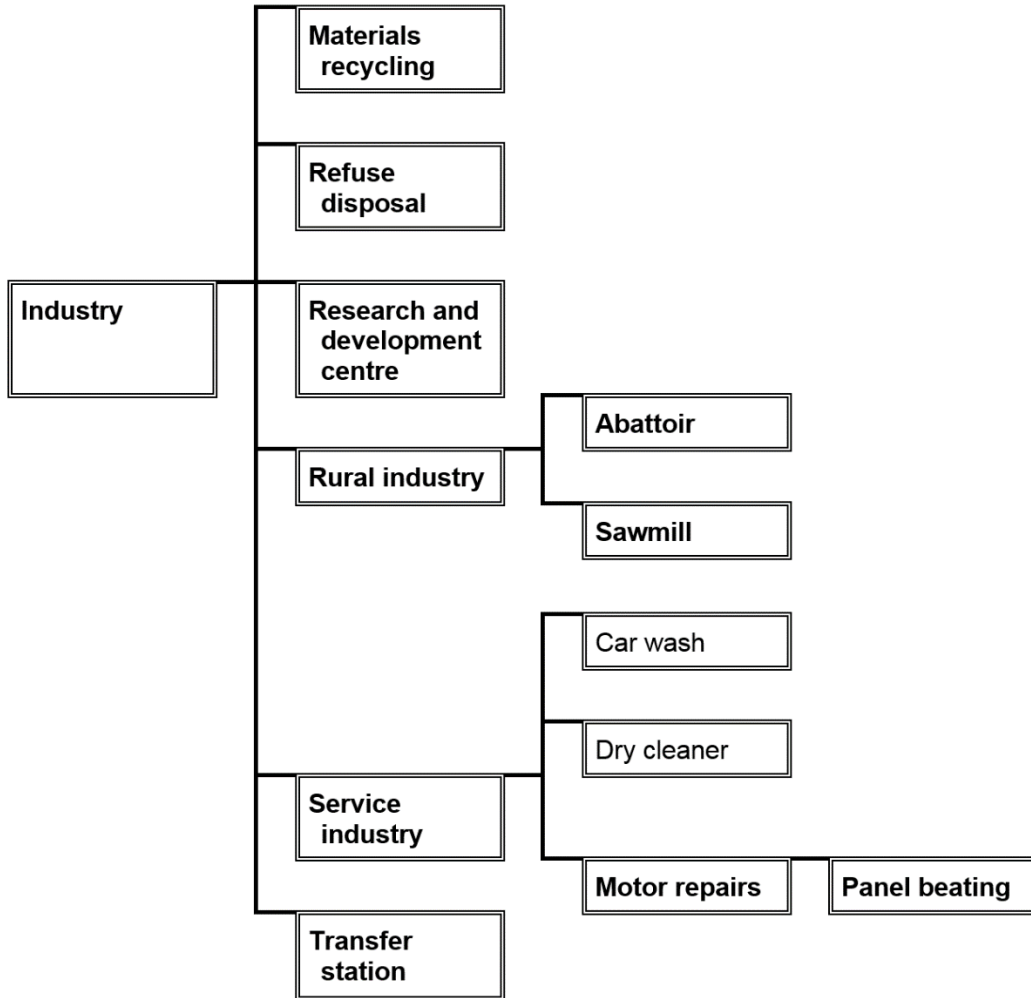
Education centre group



73.04-6

21/09/2018
VC150

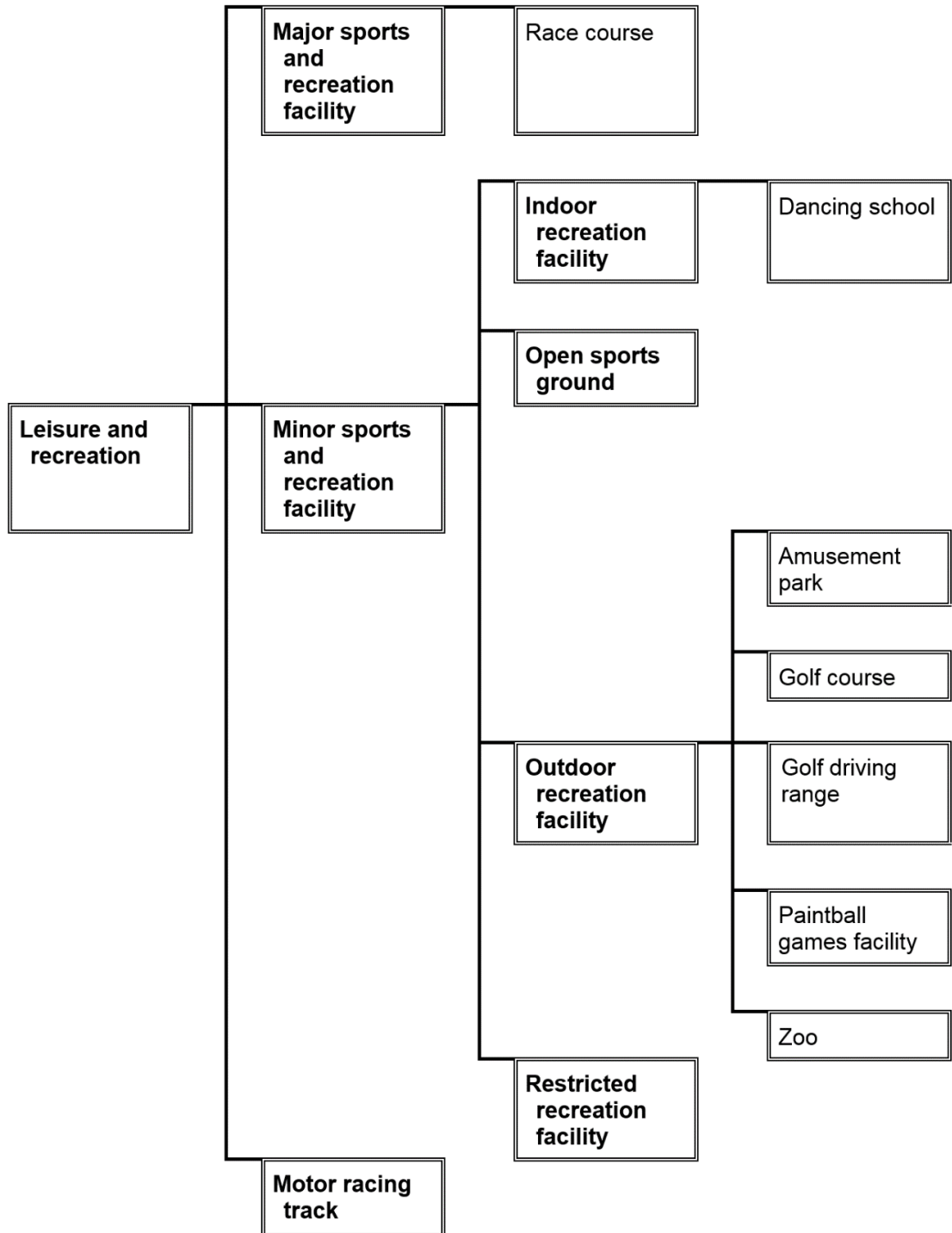
Industry group



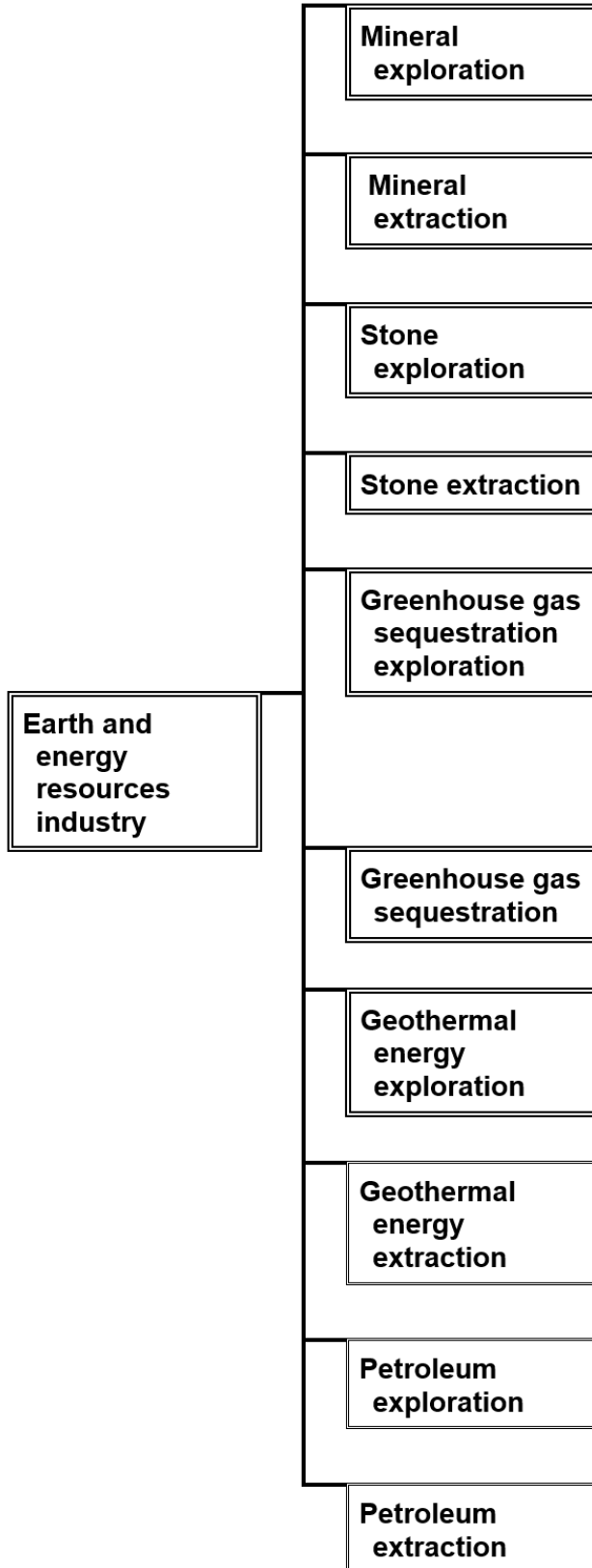
73.04-7

21/09/2018
VC150

Leisure and recreation group

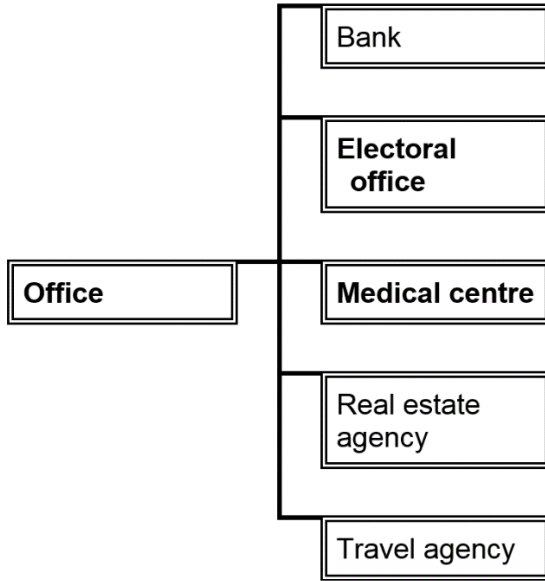


Earth and Energy Resources Group



73.04-9
21/09/2018
VC150

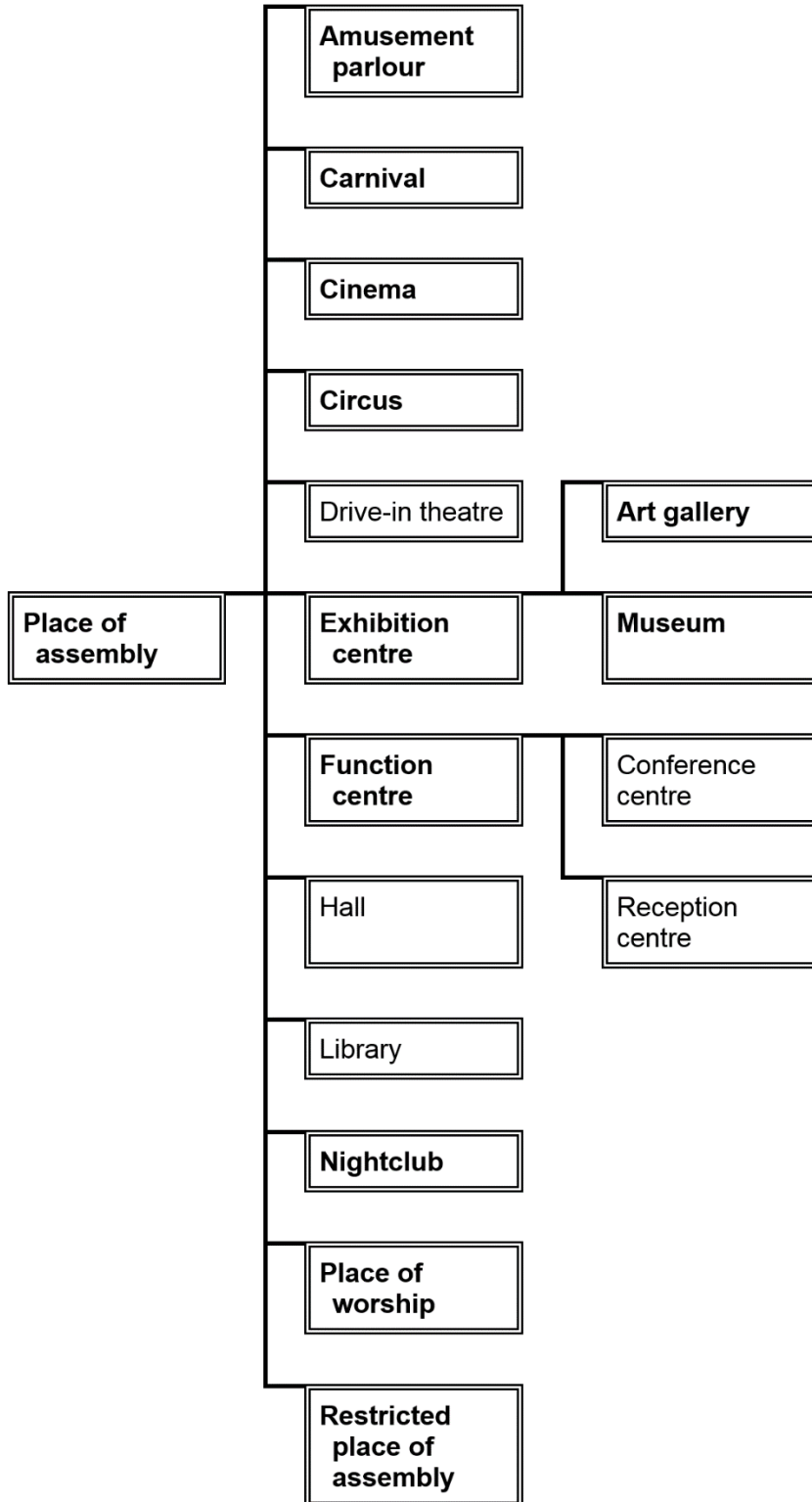
Office group



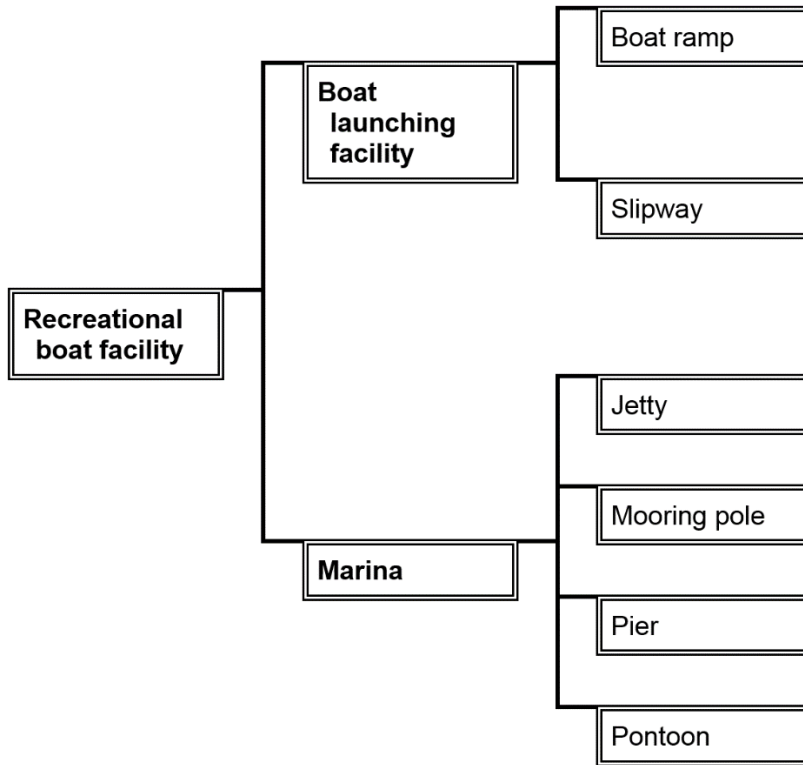
73.04-10

21/09/2018
VC150

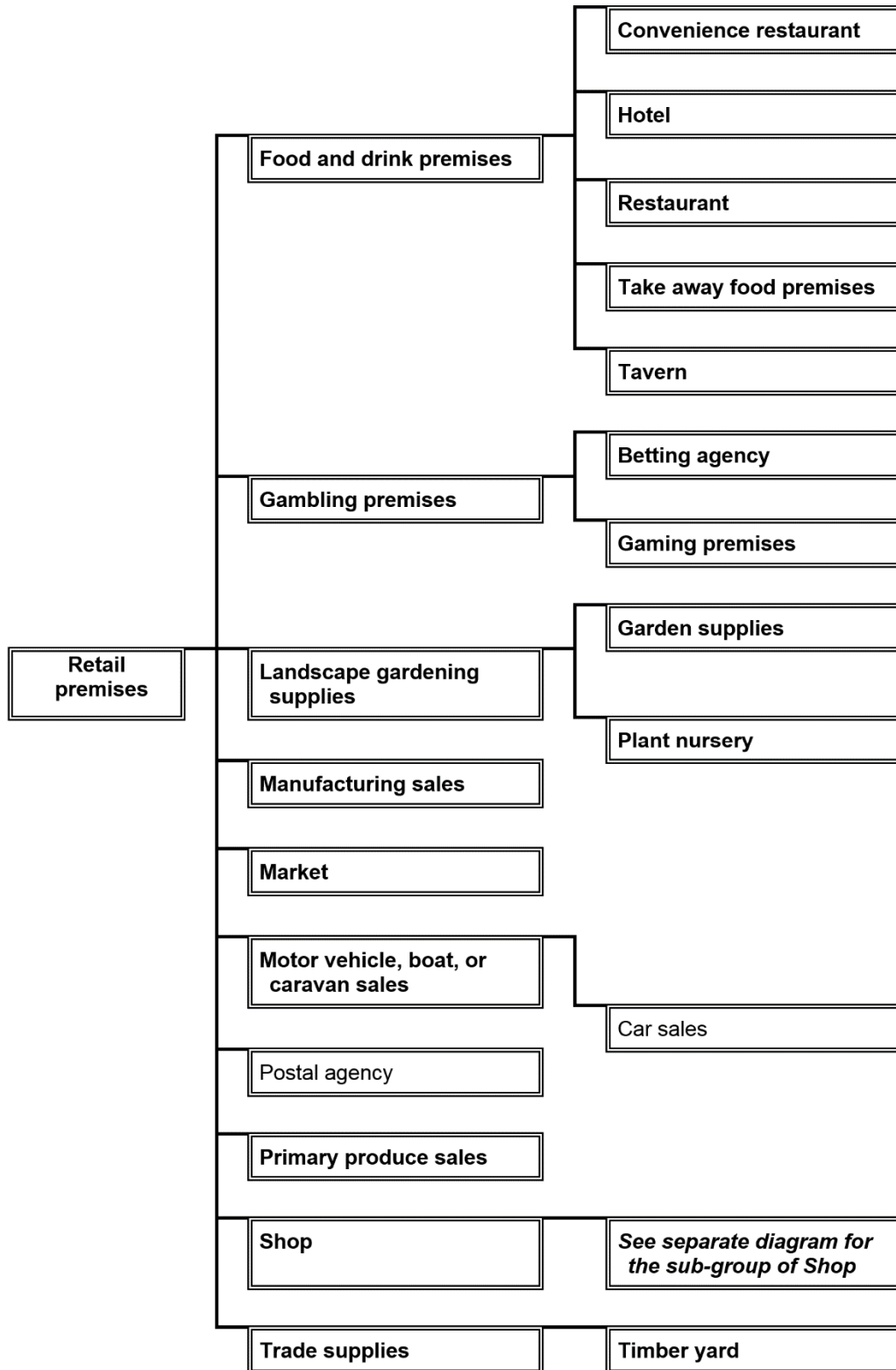
Place of assembly group



Recreational boat facility group



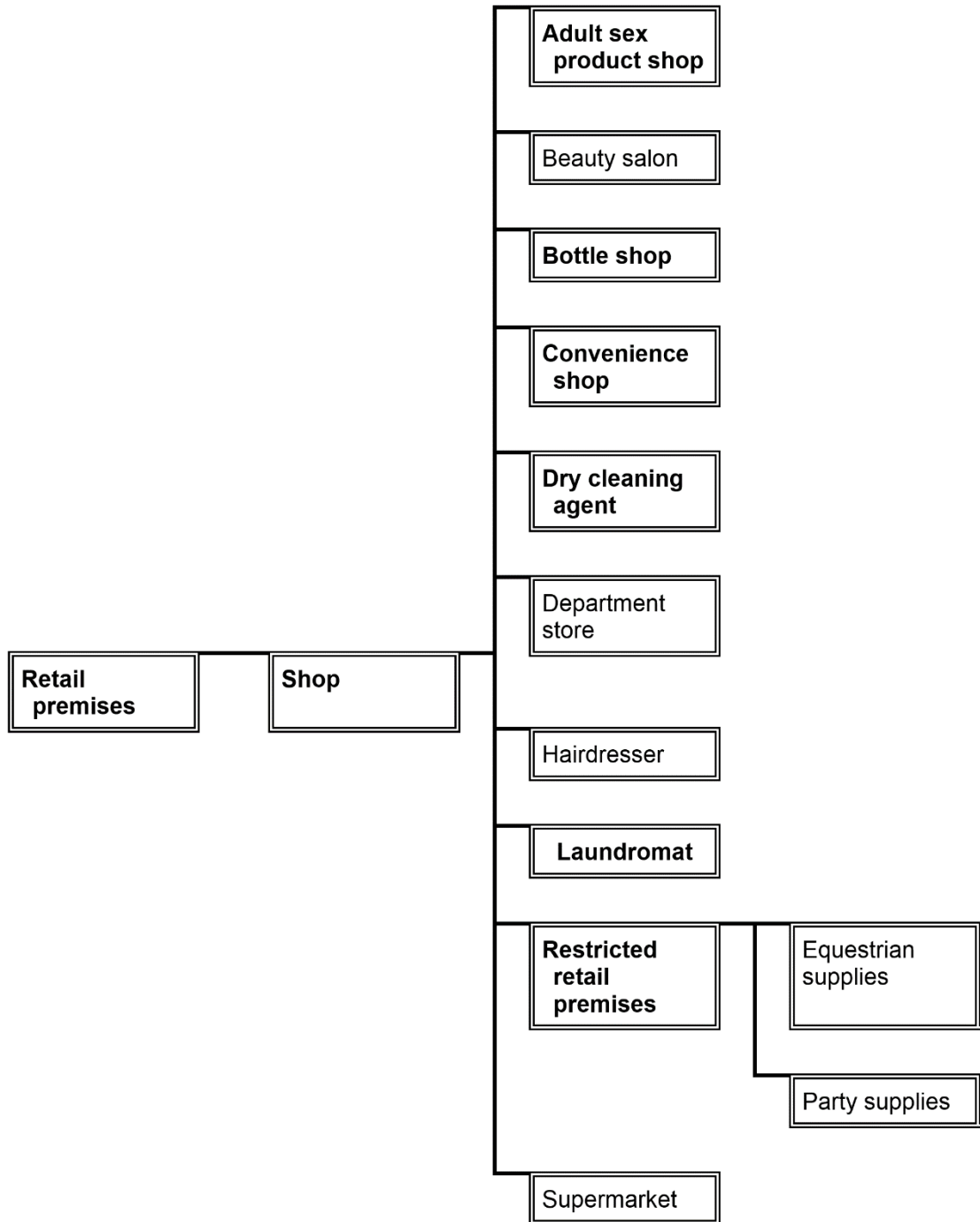
Retail premises group



73.04-13

21/09/2018
VC150

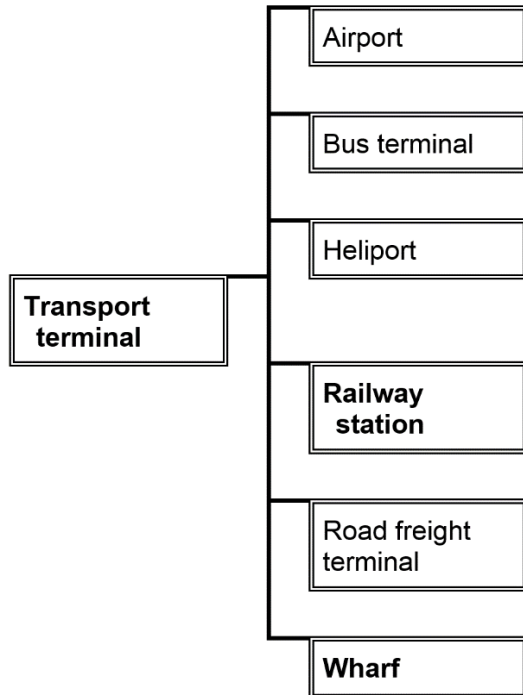
Retail premises group (sub-group of Shop)



73.04-14

21/09/2018
VC150

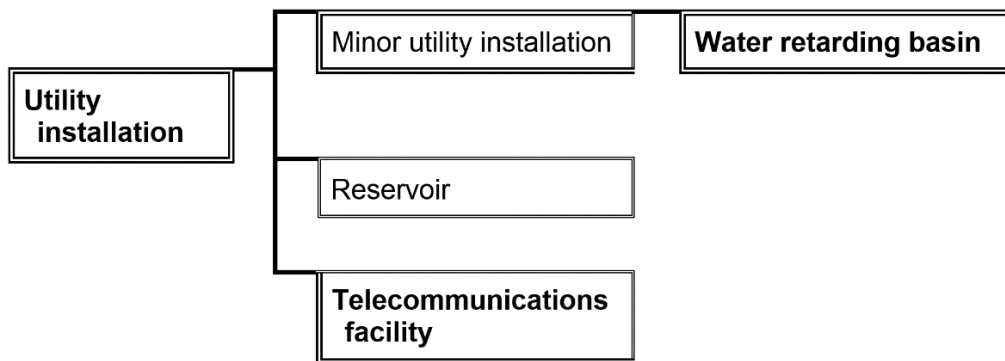
Transport terminal group



73.04-15

21/09/2018
VC150

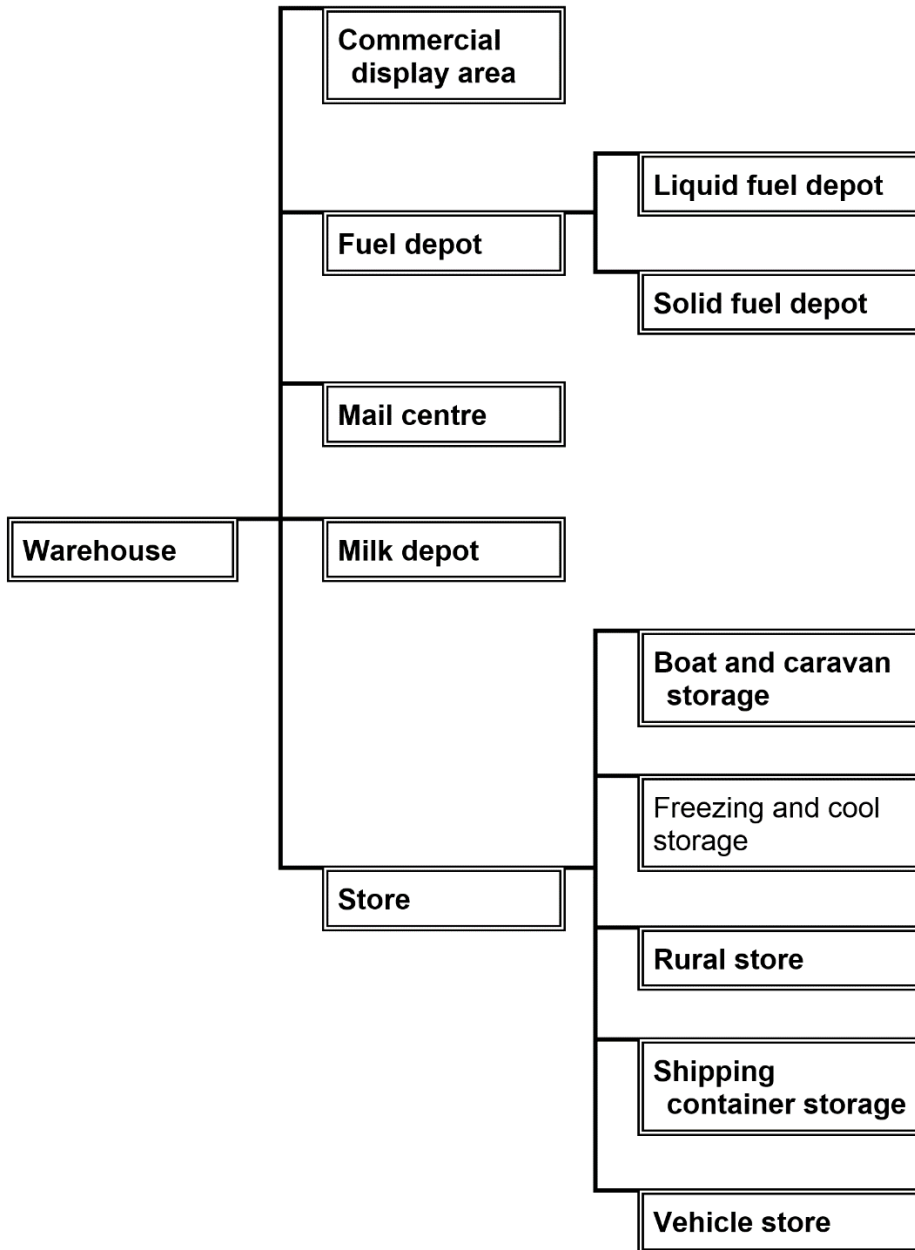
Utility installation group



73.04-16

21/09/2018
VC150

Warehouse group



73.04-17

21/09/2018
VC150

Renewable Energy Group



73.04-18

21/09/2018
VC150

Land use terms that are not nested

Art and craft centre

Brothel

Car park

Cemetery

Cinema based entertainment facility

Crematorium

Display home

Emergency services facility

Freeway service centre

Funeral parlour

Helicopter landing site

Home based business

Hospital

Natural systems

Research centre

Saleyard

Service station

Sign

Tramway

Veterinary centre

Winery
