

21.12 INFRASTRUCTURE11/05/2017
C197**21.12-1 Community Facilities**11/05/2017
C197

There is a need to provide community facilities to meet the needs of the growing population. Council supports the development of multi-purpose community facilities which are adaptable and encourage integrated service provision. The size and function of community facilities are designed and located to reflect its role in the hierarchy.

Objective 1: To design multipurpose community facilities

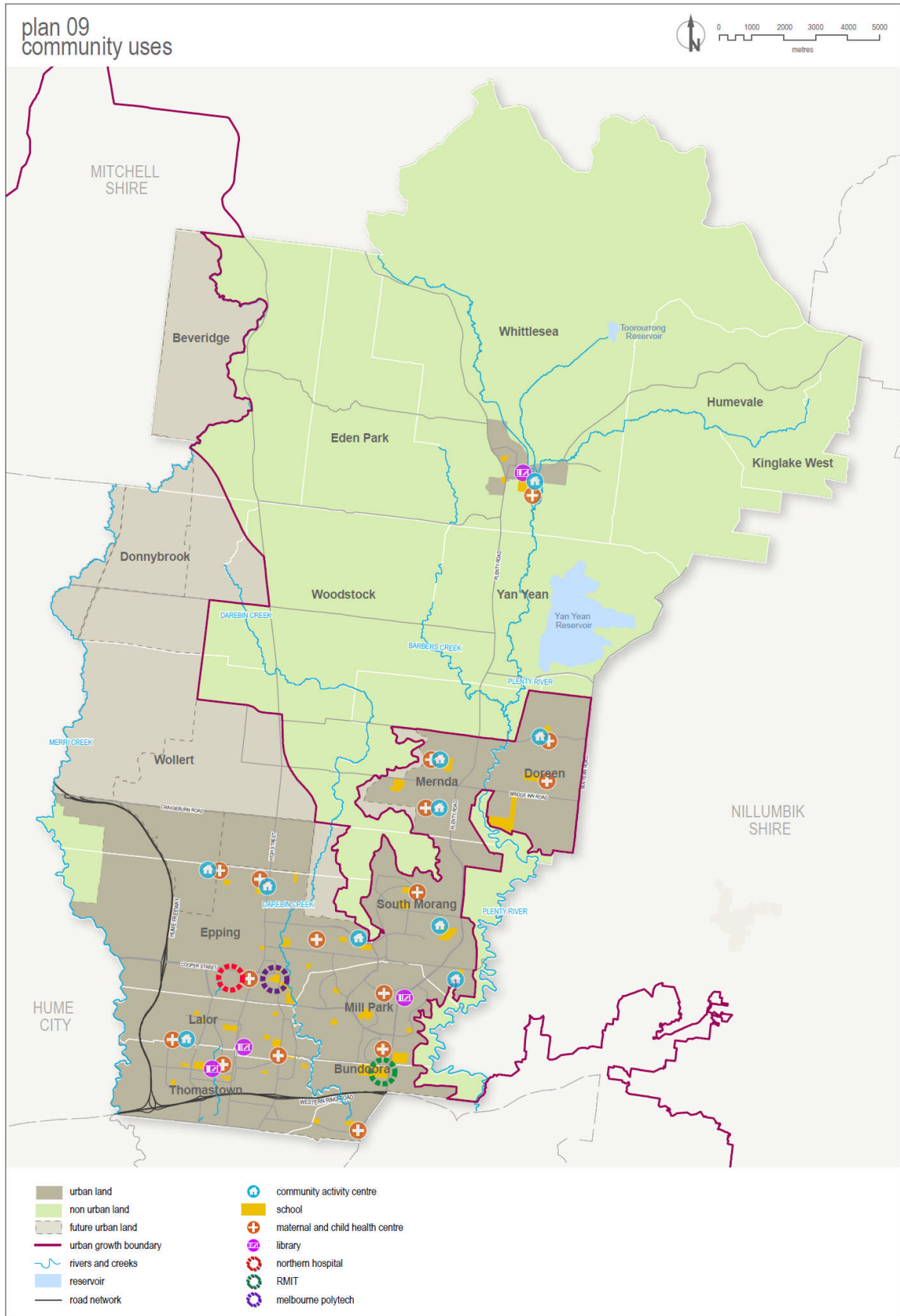
- Strategy 1.1 Include meeting and social spaces within sports and recreation facilities.
- Strategy 1.2 Co-locate facilities close to other community assets such as retail precincts, arts facilities, and libraries to maximise accessibility and convenience to users.
- Strategy 1.3 Develop hubs and precincts with the aim of facilitating an integrated service provision.
- Strategy 1.4 Encourage commercial components (such as cafes, health services, retail outlets) to provide services for community facilities.
- Strategy 1.5 Support the establishment of well-located, youth-centred facilities and youth inclusive multipurpose community facilities.
- Strategy 1.6 Support the development of well-located education precincts.
- Strategy 1.7 Support the establishment of community gardens.
- Strategy 1.8 Undertake strategies for playspaces, community meeting spaces, Living and Learning Neighbourhood Houses.

Objective 2 To provide for Local, Neighbourhood, District, Regional playspaces

- Strategy 2.1 Locate and design playspaces to serve the needs of people in their walkable catchments.
- Strategy 2.2 Utilise landscape features, including rehabilitated landscapes to provide natural outdoor spaces to improve the quality and distribution of outdoor playspaces.
- Strategy 2.3 Consider the inclusion of playspace and the opportunities for landscaped outdoor areas as play spaces when preparing a masterplan.
- Strategy 2.4 Design and equip play spaces to reflect the nominated position in the play space hierarchy.
- Strategy 2.5 Provide for regional playspaces.

Objective 3: To provide visually attractive sporting facilities which address the surrounding context.

- Strategy 3.1 Design pavilions that are responsive to their site and appropriate for their level, standard, quantity and frequency of use.



21.12-2 Health Facilities11/05/2017
C197

No content.

21.12-3 Development Infrastructure11/05/2017
C197

Rapid urban expansion requires the provision of a range of physical and social infrastructure. This infrastructure must be provided in a timely, efficient and cost effective manner, which is responsive to the needs of existing and future residents.

Objective 1: To provide physical infrastructure for growth areas by planning for and identifying means to fund the establishment and maintenance of social and physical infrastructure in a timely and efficient manner.

Strategy 1.1 Provide adequate infrastructure (physical and social) to all new developments.

Strategy 1.2 Improve the level of accessibility to services and facilities to provide a high level of self-containment for individual communities.

Strategy 1.3 Ensure that any new development which is proposed to proceed in an 'out-of-sequence' manner contributes proportionately to additional items of infrastructure brought about or brought forward by needs generated by the development.

21.12-4 Implementation11/05/2017
C197**Further Strategic Work**

- Develop strategies for playspaces, community meeting spaces and Living and Learning facilities.
- Investigate all methods of funding for items of infrastructure and select the most appropriate method.

Examine the requirement for development contributions for major activity centres.

Reference Documents

- *Community Gardens Policy 2013*
- *Municipal Lifelong Learning 2013-2016*
- *Playspace Planning Framework and Policy 2013*
- *Shaping our future Whittlesea 2030 Strategic Community Plan*
- *Sports Stadium Feasibility Study 2014*
- *Youth Plan 2030*

Other Actions

- Plan for and identify means to fund the establishment and maintenance of social and physical infrastructure in a timely and efficient manner.
- Develop on-going partnerships with the State Government to determine priorities and funding mechanisms for the provision of key items of infrastructure.

- Continue to seek State and Federal Government funding for major infrastructure items such as public transport.
- Investigate opportunities for tertiary education facilities and community health facilities within Precinct Structure Plan areas, as opportunities arise.